



PLAN OF CANADA VILLAGE DEVELOPMENT



CANADA VILLAGE PANORAMA



JUN LU HOUSE AND ADAPTATION FOR LODGING



FAÇADE ART IN CANADA VILLAGE



RESIDENT OF CANADA VILLAGE



CHIKAN - CENTER OF DIAOLOU REGION



LION DANCE

THIS LEAFLET IS A SHORT REVIEW OF A COMPREHENSIVE STUDY CARRIED OUT BY THE KAIPING PROTECTION AND MANAGEMENT OFFICE OF DIAOLOU AND VILLAGES, DURING THE YEARS 2005-6. ITS MAIN OBJECTIVE IS TO CONSERVE AND DEVELOP THE CULTURAL AND NATURAL HERITAGE OF THE REGION, FOR THE BENEFIT OF ITS INHABITANTS AND VISITORS. THE AREA HAS BEEN NOMINATED BY THE PEOPLE'S REPUBLIC OF CHINA FOR A UNESCO INSCRIPTION AS A WORLD HERITAGE SITE.

TAN WEIQIANG
TEL: (0086-0750)2263888, FAX: (0086-0750)2263637
EMAIL: KAIPINGDIAOLOU@YAHOO.COM.CN

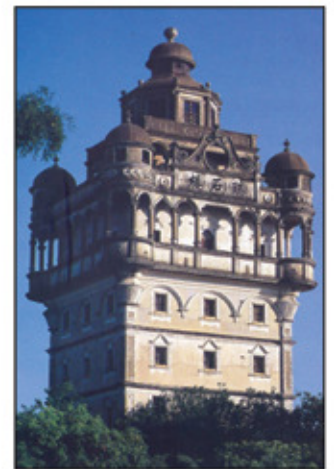
JULY 2006

GIORA SOLAR ARIE RAHAMIMOFF
ARCHITECTURE, URBANISM, CONSERVATION
EMAIL: GIORAS@012.NET.IL, AR_RA_AR@NETVISION.NET.IL

开平碉楼与村落
保护和发展规划
文化遗产·建筑·旅游
THE DIAOLOU TOWERS
AND THE VILLAGES OF KAIPING
A PLAN FOR CONSERVATION AND DEVELOPMENT
CULTURAL HERITAGE, ARCHITECTURE, TOURISM



中华人民共和国
国家文化遗产行政管理局
THE STATE ADMINISTRATION OF CULTURAL HERITAGE
OF THE PEOPLE'S REPUBLIC OF CHINA



ZILI VILLAGE - ONE OF THE 5 VILLAGES INSCRIBED AS WORLD HERITAGE SITES



TANJIANG RIVER - MOST OF THE DIAOLOUS WERE BUILT ALONG THE RIVER



GEOGRAPHICAL CONTEXT

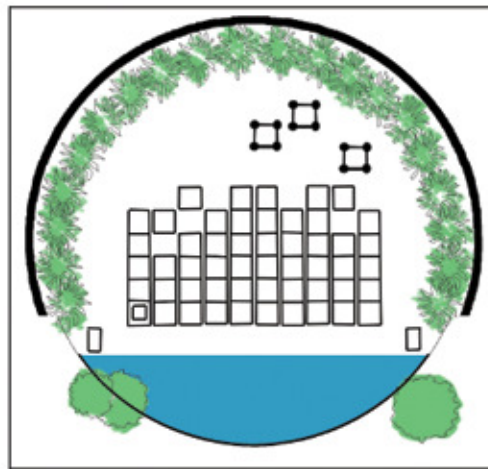


DIAGRAM OF A VILLAGE AND DIAOLOU



VIEW OF KAIPING CULTURAL LANDSCAPE FROM RUISEI TOWER

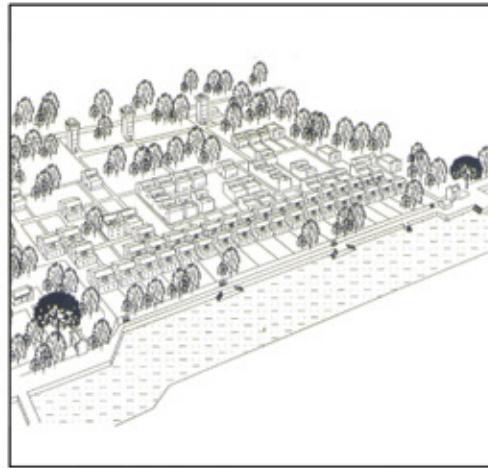


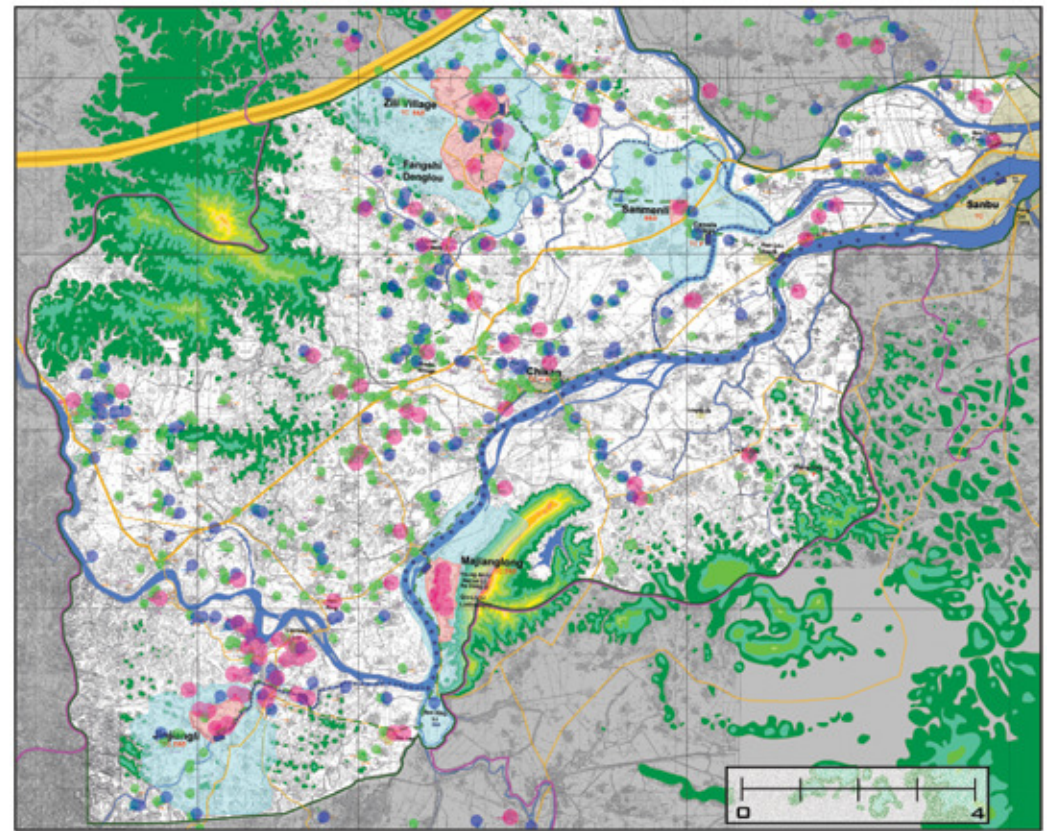
DIAGRAM OF A VILLAGE



SANMENLI - OLDEST DIAOLOU



MAJIANGLONG



PLAN OF DIAOLOU REGION

LEGEND:

- KAIPING CITY BOUNDARY
- DIAOLOU REGION BOUNDARY
- GRADE 1
- GRADE 2
- GRADE 3

LIST OF TOPICS OF THE REGIONAL PLAN:

1. DIRECT IMPROVEMENT OF CORE AREAS IN 5 SITES
2. MANAGEMENT OF BUFFER ZONES
3. LAND PROMENADE: SANBU-CHIKAN-JINJIANGLI
4. PROMENADE LOOP: NANLOU - CANADA VILLAGE-SANMENLI-FANG-ZILI-LIUYUAN GARDENS-CHIKAN
5. WATERWAY AND PIERS
6. REMOVAL OF DISTURBING ELEMENTS
7. CANADA VILLAGE AS A PILOT PROJECT
8. CEMENT FACTORY CONVERSION TO HOTEL
9. CHIKAN RENEWAL
10. DEVELOPMENT OF 5 ADDITIONAL PARADISOS: MAJIANGLONG, ZHONG XINGLI, JINJIANGLI, SHISHI, CHIKAN
11. 500 B&B ROOMS
12. SIGNAGE
13. TOURIST CENTERS: SANBU, ZILI, CHIKAN, MAJIANGLONG, JINJIANGLI
14. URBAN HOSTEL IN BAU YUAN FANG (SANBU)
15. AGRITOURISM DEVELOPMENT: FARM HOUSES, FIELDS, CULTURAL LANDSCAPES
16. ADDITIONAL TOURIST ATTRACTIONS: LIUYUAN GARDENS
17. ECONOMIC PLAN FOR REGIONAL AND TOURIST DEVELOPMENT
18. BROCHURES, GUIDEBOOKS AND GUIDED TRAILS



THE THREE TOWERS OF JINJIANGLI